

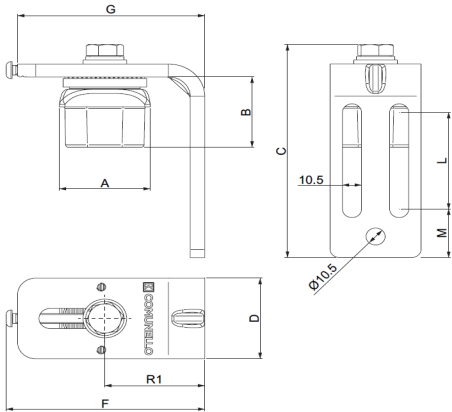


PRODUCT DETAILS

Product code: Description:

**6785L40ST** Upper Hinge with Bearing for 40mm Box with Square Insert and L Plate

**6785L50ST** Upper Hinge with Bearing for 50mm Box with Square Insert and L Plate



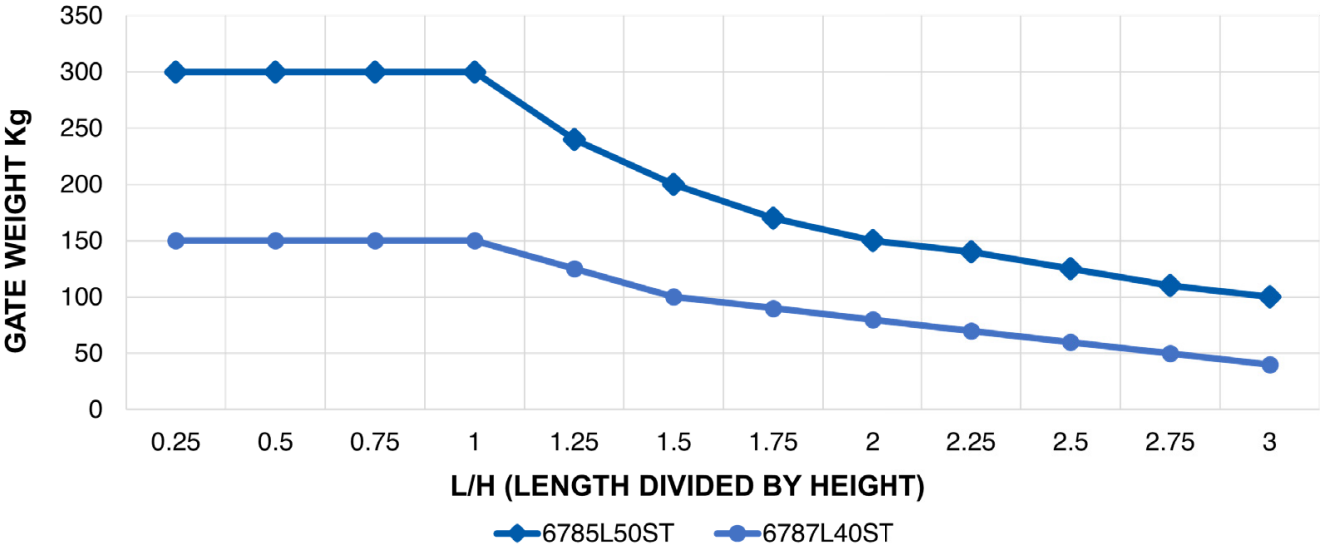
DIMENSIONS (MM)

Dim.	6785L40ST	6785L50ST
A	40.0	50.0
B	36.0	52.0
C	132.0	132.0
D	50.0	50.0
F	109.3	109.3
G	103.0	103.0
L	60.0	60.0
M	30.0	30.0

TECHNICAL CHARACTERISTICS

Code	Weight of Part kg	Load Bearing Capacity kg	Material	Range mm
6785L40ST	0.90	150	Galvanised	55 - 85
6785L50ST	1.35	300	Galvanised	55 - 85

LOAD ACCORDING TO GATE'S DIMENSIONS



MAINTENANCE FREQUENCY\*

Private Home	Company	Warehouse	Condominium <20 Units	Condominium >20 Units
1 Year	1 Year	1 Year	6 Months	6 Months

\* This section refers to normal workplace conditions (not marine or particularly aggressive environments)

- Check hinge wear
  - Check tightening of upper screws
- Check fixing of plugs
  - Check welds and horizontality of sash

## IMPORTANT INFORMATION

### USE:

Adjustable hinge for swing gates with square tubular.

### TYPE:

Upper hinge with bearing.

### FIXING:

To fixing to the pillar. The support enables hinge adjustment even after installation.

### MATERIAL:

Iron body, aluminium tubular joint.

### RECYCLING:

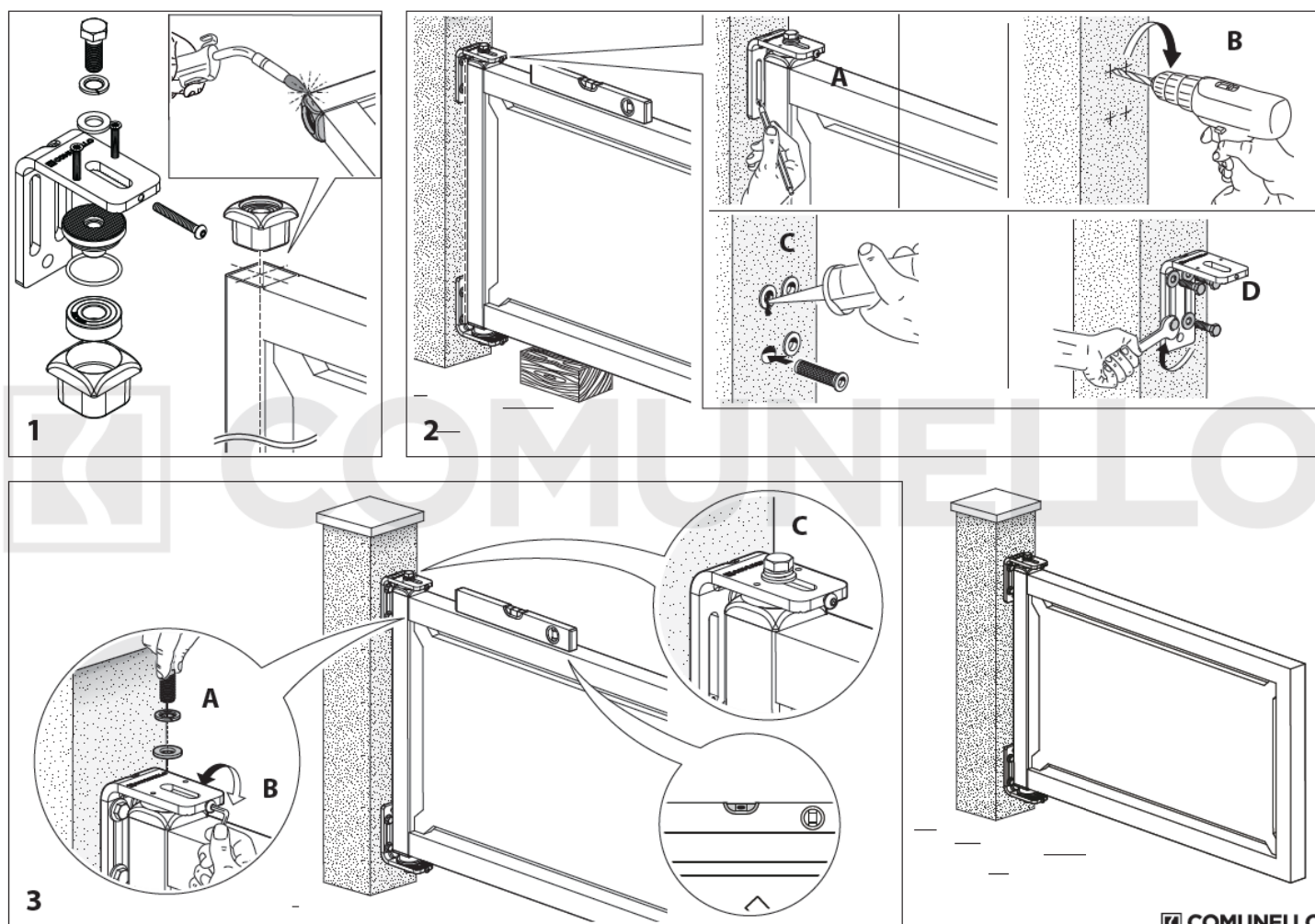
Disposal as ferrous material in accordance with the current laws in the country of installation.

### PARTS SUBJECT TO WEAR:

Bearing.

### IMPORTANT:

The manufacturer reserves the right to modify the characteristics of the product as required without notice. The manufacturer declines any liability for even partial modifications to the product, and the declared performance values are valid only if the installation procedures are carried out by qualified personnel.



COMUNELLO

Whilst every effort has been made to ensure the accuracy of the information supplied. F.H. Brundle cannot be held responsible for any errors or omissions. This product must only be employed for its original intended use. Any other use is wrong and potentially dangerous. Installation must be carried out in full compliance with current regulations. F.H. Brundle cannot be held liable for any damages resulting from wrongful, erroneous or negligent use.